

৪৫তম বিমিএম নির্ধিত ফুল কোর্স

ENGLISH

Lecture: 01

Topic:

Syllabus Discussion, Course Content and Ideas behind the
Lecture Plan, Interchanging Parts of Speech, Affixation,
(Solving Question No. 3).

200 marks ১০০মু
১০০মু
4 hr

class will start at

Eng BD Affairs 7:05 Pm.
Intl Math - Mental ability
Science written
Bangla marks
১২ marks ১০
আমি/বাবু



probable Routine

October — last week — Sun — English — 200 Marks

Mon — BD Affairs — 200

Tue — Intl — 100

Wed — Math ⁵⁰, M.A ⁵⁰ — 100

Thurs — Science — 100

Sun — Bangla — 200 — 1 paper — Both

100 — Technical ^{Gen}

440 ²⁰⁰

Wed
Thurs



BCS WRITTEN SYLLABUS DISCUSSION (ENGLISH)

উত্তরণ
ক্যারিয়ার এন্ড স্কিলস একাডেমি

600 H

subject 2
syllabus follow
20 yr, B.D affairs

preli quality 20 marks 1st part 100 marks
BCS English Written

150
140-150

150
140-150
Time Duration: 4 Hours

38 H
BES

BCS English Written

Part - A
Marks - 100

Reading Comprehension-- free handwriting

01. An unseen passage dealing with a topic relevant to our times will be set. Candidates will be required to answer :

- (a) a number of thematic questions that will test their understanding of the passage. (30 marks)
- (b) a number of questions related to grammar and usage. (30 marks)

10x3 = 30 marks Thematic question

6 set 2, 3, 4, 5, 6, 7 - 30 marks - vocabs

02. Candidates will be required to write a summary of the given passage in their own words within 100 words. (20 marks)

synonym, Antonym, sentence making, contextual meaning, prefix-suffix, idioms & A.P

646-642

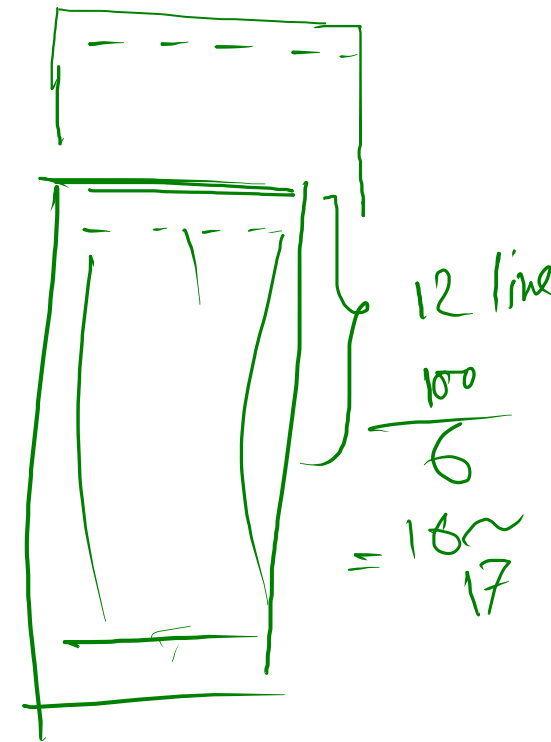
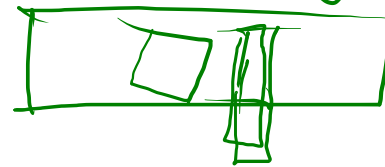
12

74

03. Candidates will have to write a letter relating to the thematic issue of the given passage to the editor of an English newspaper. (20 marks)

12

Nusrat
online Exam 14 page
Legal page





BCS WRITTEN SYLLABUS DISCUSSION (ENGLISH)

Composition

Part-B
Marks-100

04. Candidates will be required to compose an essay on a topic related to an issue of topical relevance. The essay must conform to the word limit set and must convey a candidate's ability to express his or her ideas clearly and correctly in English as well as reflect and analyze a topic of contemporary interest.

$74 + 60 = 134$

30+

(50 marks)

05. Translation from English into Bangla
Candidates will be required to translate a short passage from Bangla into English and another from English into Bangla.

E2B

60 marks

30+

(25 marks)

06. Translation from Bangla into English
Candidates will be required to translate a short passage from Bangla into English

B2E

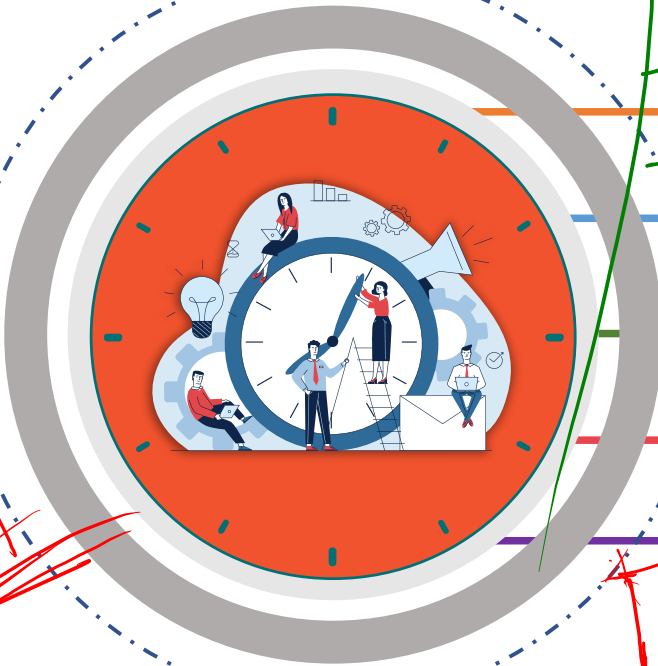
(25 marks)



5/12 written

TIME MANAGEMENT

120 days



T.Q - Grammar - 60 marks

10:00

11:15

11:30

12:00

1:00

2:00

01 ✓

02 ✓

03 ✓

04 ✓

05 ✓

Comprehension: 75 min

Summary: 15 min

Letter: 30 min

Both the translations: 60 min

Essay: 60 min

75 + 15 + 30
+ 60 + 60

50% ১০ ০২৫ ১২ page

number add hot 5 page

30% ১০ ০২৫ (not lined) fail

part A Translation

Essay

IBA - BCS

GRE

130+ Eng



উত্তরণ ইংরেজি (লিখিত) লেকচার সূচি

২-৭ ০৯/১১
২০১ - ২৪ - ২৫+

Lecture No.	Topic	Topic of Discussion	Daily Exam		Evaluation Test		
			Marks	Time	Marks	Time	
						Online	Physical
Lecture - 01	Basic Grammar	Syllabus Discussion, Course Content and Ideas behind the Lecture Plan, Interchanging Parts of Speech, Affixation, (Solving Question No. 3)	20	30	75	115	110
Lecture - 02		Constructing Phrases and Clauses, <u>Joining Sentences with Relative Pronouns and Conjunctions</u> , Integrating Linkers, Sentence Run-ons, (Solving Question No. 4)	25	35			
Lecture - 03		Using appropriate <u>capitalization</u> , punctuation and quotation marks, Writing the <u>Conditionals</u> , Using the Appositives, <u>Introductory phrases</u> and Embedded Questions, <u>Common Mistakes in Writing</u> , (Solving Question No. 5)	25	35			



Business Communication

উত্তরণ ইংরেজি (লিখিত) লেকচার সূচি

Lecture No.	Topic	Topic of Discussion	Daily Exam		Evaluation Test		
			Marks	Time	Marks	Time	
						Online	Physical
Lecture - 04	Translation, Vocabulary	Translation 1: Introduction to <u>Translation</u> , Your Vocabulary Repertoire-01 (A-C)	50	60	100	125	120
Lecture - 05		Translation 2: An Ideal <u>Translation</u> , Your Vocabulary Repertoire-02 (D-F)	50	60			
Lecture - 06		Translation 3: Hands on Experience, Your Vocabulary Repertoire-03 (G-M)	50	60			
Lecture - 07		Translation 4: Thematic Translation, Your Vocabulary Repertoire-04 (N-S)	50	60			
Lecture - 08		Translation 5: Translating the literature, Your Vocabulary Repertoire-05 (T-Z)	50	60			

Topic ৪টি class

Grammar ৩০ ৩০ ৩০

Technique

গুরুত্বপূর্ণ, মনোযোগ, Recent

Jargon
*Hercule
valiant
gallant
valorous
audacious*





‘উত্তরণ’ ইংরেজি (লিখিত) লেকচার সূচি

Lecture No.	Topic	Topic of Discussion	Daily Exam		Evaluation Test		
			Marks	Time	Marks	Time	
						Online	Physical
Lecture - 09	Reading, Themes, Letter, Comprehension, Summary.	Reading Comprehension-01: Introduction to Reading Strategies, <u>Guessing the meaning of the word</u> , Paraphrasing.	100	125	100	125	120
Lecture - 10		Reading Comprehension-02: Understanding Themes, <u>Answering the Thematic Questions</u> and <u>Choosing the Title</u> .	100	125			
Lecture - 11		Reading Comprehension-03: <u>Understanding Themes</u> , <u>Answering the Thematic Questions</u> and <u>Choosing the Title</u> .	100	125			
Lecture - 12		Reading Comprehension-04: <u>Framing the Summary</u> , <u>Writing a feature</u> .	40	55			
Lecture - 13		Reading Comprehension-05: <u>Writing a letter to the editor</u> .	40	55			



‘উত্তরণ’ ইংরেজি (লিখিত) লেকচার সূচি

Lecture No.	Topic	Topic of Discussion	Daily Exam		Evaluation Test		
			Marks	Time	Marks	Time	
						Online	Physical
Lecture - 14	Essay	Essay Writing-01: How to write better, Constructing an Essay, A Brainstorming, Parts of an Essay, why your Introduction and Conclusion Matter, Constructing a Thesis Statement, Narrative Writing, Descriptive Writing.	50	65	50	65	60
Lecture - 15		Essay Writing-02: <u>The Expository</u> , The Argumentative, The Persuasive.	50	65			
Lecture - 16		Essay Writing-03: <u>Synthesis Essay</u> , Documented Essay, Avoiding Plagiarism, Common Mistakes in Writing, Theoretical & Thematic Issues, Contemporary National & International Issues, Written Hacks, Final Suggestions from Expert.	50	65			



CHANGING PARTS OF SPEECH

❖ Fill in the table by putting words in the empty cells according to their parts of speech:

prefix - suffix 20:11 - 20:21

burial → noun
buried → verb

He is very friendly with me.
friendly → adj / adv

3

Sl. No.	Noun	Verb	Adjective
01.	Friend <i>He is my friend.</i> adj / noun	(a) Befriend	(b) friendly
02.	(a) burial	bury — buried — buried P.S	(b) Buried
03.	(a) Death	Die	(b) Dead
04.	(a) Dread	(b) Dread	Dreadful — ভয় Terrific, Horrific
05.	Passage	(a) pass	(b) passable



~~Dread + ful~~
~~ness~~

noun

strategy: Utterance go for (utter rules)

al suffix noun

SDA 070

ly

loving
loveable

loveable

12000
2300

Love

Love

Love is

noun

ly

live

love

loveable

ly



CHANGING PARTS OF SPEECH

❖ Fill in the table by putting words in the empty cells according to their parts of speech:

Sl. No.	Noun	Verb	Adjective
01.	Sole	X ✓	a)
02.	b)	Please	c)
03.	Air	x ✓	d)
04.	e)	X ✓	Sober
05.	f)	Abstain	g)



CHANGING PARTS OF SPEECH

❖ Fill in the table by putting words in the empty cells according to their parts of speech:

Sl. No.	Noun	Verb	Adjective
01.	Arsenic	X	(a)
02.	(b)	Carry	x
03.	Sea	x	(c)
04.	(d)	X	Brief
05.	(e)	Foster	x



ing ed ly VERBS

able

➔ Knowing Suffix and prefix is a good way to answer the questions regarding the part of speech.

Prefix	Meaning	Examples
re-	<u>again or back</u>	<u>retake, rebuild,</u>
dis-	reverses the meaning <u>of the verb</u> ✓	
over-	<u>too much</u>	<u>overpopulated</u>
un-	reverses the meaning <u>of the verb</u> ✓	
mis-	<u>badly or wrongly</u>	
out-	more or better than <u>others</u> →	
be-	make or <u>cause</u> ✓	
co-	<u>together</u> ✓	



VERBS

Omni - prefix - all
Omnipresent, Omniscient,

➔ Knowing Suffix and prefix is a good way to answer the questions regarding the part of speech.

Prefix	Meaning	Examples
<u>de-</u>	do the <u>opposite of</u>	
fore-	earlier, before	
inter-	between	
pre-	before	
sub-	under/below	
trans-	across, over	
under-	not enough	



VERBS

➔ Suffix used to form verbs with the meaning "cause to be"..

Suffix	Example
-ise ✓	stabilise, characterise,
-ate ✓	
-fy ✓	
-en ✓	



NOUNS

⇒ prefix + noun → noun

prefix - suffix

Prefix	Meaning	Examples
anti- ✓	against	
auto-	self	
bi-	two	
co-	joint	
counter-	against	
dis-	the converse of	
ex-	former	
hyper-	extreme	
in-	the converse of	
in-	inside	



NOUNS

Prefix	Meaning	Examples
inter-	Between	
kilo-	Thousand	
mal-	Bad	
mega-	Million	
mis-	Wrong	
mini-	Small	
mono-	One	
neo-	New	
out-	Separate	
poly-	Many	
pseudo-	False	
re-	Again	



NOUNS

Prefix	Meaning	Examples
semi-	Half	
sub-	Below	
super-	more than, above	
sur-	over and above	
tele-	Distant	
tri-	Three	
ultra-	Beyond	
under-	below, too little	
vice-	Deputy	



NOUNS

➔ Suffix added to a verb (V), noun (N) or adjective (A) → noun

Suffix	Meaning	Examples
-tion -sion	action/instance of V-ing	
-er	person who V-s something used for V-ing	
-ment	action/instance of V-ing	
-ant -ent	person who V-s	
-age	action/result of V	
-al	action/result of V	
-ence -ance	action/result of V	



pliable, futile - ^{বান্ধব} ~~স্বপ্ন~~ **NOUNS**
 fragile

friend - noun

⇒ Suffix added to a verb (V), noun (N) or adjective (A) → noun

161 page

Suffix	Meaning	Examples
-ery/-ry	action/instance of V-ing place of V-ing	
-er	person concerned with N	
-ism	doctrine of N	
-ship	state of being N	friendship
-age	collection of N	
-ity	state or quality of being A	futility
-ness	state or quality of being A	
-cy	state or quality of being A	



ADJECTIVES

- ➔ Many adjectives are formed from a base of a different class with a suffix (e.g. -less, -ous). Adjectives can also be formed from other adjectives, especially by the negative prefixes (un-, in- and non-). The most common suffixes are -al, -ent, -ive, -ous, -ful, -less.
- Suffix added to verbs or nouns → adjective *rules, sentence*

Suffix	Example
-al	<u>burial</u> — noun
-ent	
-ive	
-ous	
-ful	
-less	
-able	



ADJECTIVES

➔ negative + adjective → adjective

Prefix	Examples
un-	
im-/in-/ir-/il-	
non-	
dis-	



LIST OF VERBS, NOUNS, ADJECTIVES & ADVERBS

➔ It is very important to identify the parts of speech. There will be a segment where you have to transform noun into verb, verb into adjective and vice versa. To crack this, you should practice and know suffixes and prefixes.

Sl.	Verbs	Nouns	Adjectives	Adverbs
1	accept	acceptance	acceptable	
2	achieve	achievement	achievable	
3	act	action	active	actively
4	act	activity	active	actively
5	act	activeness	active	actively
6	add	addition	additional	
7	adjust	adjustment	adjustable	
8	admire	admiration	admirable	
9	advise	advice	advisable	



LIST OF VERBS, NOUNS, ADJECTIVES & ADVERBS

Sl.	Verbs	Nouns	Adjectives	Adverbs
10	amass	mass	massive	massively
11	amazed	amazement	amazing	
12	amuse	amusement	amusing	
13	annoy	annoyance	annoying	
14	approach	approach	approachable	
15	attend	attention	attentive	
16	attract	attraction	attractive	
17	avoid	avoidance	avoidable	
18	believe	belief	believable	
19	blacken	blackness	black	
20	bleed	blood	bloody	



LIST OF VERBS, NOUNS, ADJECTIVES & ADVERBS

Sl.	Verbs	Nouns	Adjectives	Adverbs
21	bore	boredom	boring	
22	bother	botheration	bothering	
23	breathe	breath	breathing	
24	bury	burial	buried	
25	care	care	careful	carefully
26	challenge	challenge	challenging	
27	chase	chase	chasing	
28	cheer	cheerfulness	cheerful	cheerfully
29	choose	choice	chosen	
30	clarify	clarity	clear	clearly



LIST OF VERBS, NOUNS, ADJECTIVES & ADVERBS

Sl.	Verbs	Nouns	Adjectives	Adverbs
31	collect	collection	collective	collectively
32	comfort	comfort	comfortable	comfortably
33	complex	complexity	complex	
34	confuse	confusion	confused	
35	consider	consideration	considerable	considerably
36	console	consolation	consoled	
37	continue	continuity	continuous	continuously
38	craze	craze	crazy	crazily
39	create	creation	creative	creatively
40	credit	credit	creditable	creditably



LIST OF VERBS, NOUNS, ADJECTIVES & ADVERBS

Sl.	Verbs	Nouns	Adjectives	Adverbs
41	cure	cure	curable	
42	curse	curse	cursed	
43	damage	damage	damaged	
44	deafen	Deafness	deaf	
45	decide	decision	decisive	
46	decorate	decoration	decorative	
47	delight	delight	delightful	delightfully
48	demand	demand	demanding	
49	derive	derivation	derivative	
50	deserve	deserve	deserving	



LIST OF VERBS, NOUNS, ADJECTIVES & ADVERBS

Sl.	Verbs	Nouns	Adjectives	Adverbs
51	destroy	destruction	destructive	destructively
52	develop	development	developing	
53	die	death	dead	
54	differ	difference	different	differently
55	disturb	disturbance	disturbing	
56	dust	dust	dusty	
57	educate	education	educative	
58	embarrass	embarrassment	embarrassing	
59	empower	power	powerful	powerfully
60	empty	emptiness	empty	



LIST OF VERBS, NOUNS, ADJECTIVES & ADVERBS

Sl.	Verbs	Nouns	Adjectives	Adverbs
61	encircle	circle	circular	circularly
62	encourage	courage	courageous	courageously
63	endanger	danger	dangerous	dangerously
64	enthuse	enthusiasm	enthusiastic	
65	enumerate	number	numerable	
66	envy	envy	envious	enviously
67	evaporate	evaporation	evaporating	
68	expect	expectation	expected	expectedly
69	explain	explanation	explainable	
70	explore	exploration	exploring	



LIST OF VERBS, NOUNS, ADJECTIVES & ADVERBS

Sl.	Verbs	Nouns	Adjectives	Adverbs
71	fascinate	fascination	fascinating	
72	feed	food		
73	firm	firmness	firm	firmly
74	fly	flight	flying	
75	force	force	forceful	forcefully
76	glorify	glory	glorious	gloriously
77	grow	growth	growing	growingly
78	harm	harm	harmful	harmfully
79	hate	hatred	hateful	hatefully
80	heal	health	healthy	healthily



LIST OF VERBS, NOUNS, ADJECTIVES & ADVERBS

Sl.	Verbs	Nouns	Adjectives	Adverbs
81	hope	hope	hopeful	hopefully
82	identify	identification	identified	
83	identify	identity	identifying	
84	imitate	imitation	imitative	imitatively
85	impress	impression	impressive	impressively
86	include	inclusion	inclusive	inclusively
87	indicate	indication	indicative	indicatively
88	inform	information	informative	
89	inhabit	habitat	inhabitant	
90	injure	injury	injurious	injuriously



LIST OF VERBS, NOUNS, ADJECTIVES & ADVERBS

Sl.	Verbs	Nouns	Adjectives	Adverbs
91	inquire	inquiry	inquiring	
92	instruct	instruction	instructive	
93	insult	insult	insulting	insultingly
94	intent	intention	intentional	intentionally
95	interfere	interference	interfering	
96	introduce	introduction	introductory	
97	invent	invention	inventive	
98	irritate	irritation	irritating	irritatingly
99	lead	leadership	leading	leadingly
100	live	life	lively	livingly



LIST OF VERBS, NOUNS, ADJECTIVES & ADVERBS

Sl.	Verbs	Nouns	Adjectives	Adverbs
101	live	life	alive	livingly
102	live	liveliness	lively	livingly
103	lose	loss	lost	
104	madden	madness	mad	madly
105	migrate	migration	migrating	
106	modernize	modernity	modern	
107	moisten	moisture	moistures	
108	monotonies	monotony	monotonous	monotonously
109	move	movement	movable	movingly
110	narrow	narrowness	narrow	



LIST OF VERBS, NOUNS, ADJECTIVES & ADVERBS

Sl.	Verbs	Nouns	Adjectives	Adverbs
111	nationalize	nationality	national	nationwide
112	observe	observation	observatory	
113	own	ownership	own	
114	perform	performance	performing	
115	permit	permission	permissible	
116	persuade	persuasion	persuasive	
117	please	pleasure	pleasant	
118	popularize	popularity	popular	
119	quicken	quickness	quick	quickly
120	redden	redness	red	



LIST OF VERBS, NOUNS, ADJECTIVES & ADVERBS

Sl.	Verbs	Nouns	Adjectives	Adverbs
121	sadden	sadness	sad	sadly
122	secure	security	secured	securely
123	see	scene	scenic	
124	see	sight	seen	
125	speed	speed	speedy	speedily
126	whiten	whiteness	white	



৪৫তম BCS লিখিত ফুল কোর্স/এক্সাম ব্যাচ

শুরু: ৩ জুন, ২০২৩

- ✓ সর্বমোট ৮০টি Zoom লাইভ ক্লাস
- ✓ সর্বমোট ১১৯টি স্ট্যান্ডার্ড এক্সাম
- ✓ সার্বস্বর্ণিক (২৪/৭) Q & A সেবা
- ✓ Analysis রিপোর্ট ও SMS রেজাল্ট
- ✓ প্রস্তুতি সহায়ক ১৫টি প্রিন্টেড বই

ভর্তি চলছে...



উত্তরণ

ক্যারিয়ার এন্ড স্কিলস একাডেমি



www.uttoron.academy

একটি উন্নয়ন-উদ্দেশ্য প্রতিষ্ঠান



SOLVING QUESTION NO.03

Answers to the Question no: 3

❖ Fill in the empty cells with words indicating appropriate parts of speech: [44th BCS]

Empowers

a) Empowerment (noun)

b) Immerse

100

Noun	Verb	Adjective
<u>Empowerment</u> (a)	Empower	X
X	<u>Immerse</u> (b)	<u>Immersive</u>
Demon	X	<u>Demonic</u> (c)
(d) <u>psychology</u>	X	Psychological
Attainment	(e) <u>attain</u>	X



SOLVING QUESTION NO.03

❖ Fill in the empty cells with words indicating appropriate parts of speech:

[44th BCS]

Solution:



SOLVING QUESTION NO.03

❖ Fill in the empty cells with words indicating appropriate parts of speech: [43th BCS]

Noun	Verb	Adjective
×	Thrive	(a)
(b)	×	Inconsistent
(c)	Assess	×
Access	(d)	×
(e)	Reduce	×



SOLVING QUESTION NO.03

❖ Fill in the empty cells with words indicating appropriate parts of speech: [43th BCS]

Solution:



SOLVING QUESTION NO.03

❖ Fill in the empty cells with appropriate words according to their parts of speech:

[41th BCS]

Noun	Verb	Adjective
(a)	absorb	×
(b)	Include	×
Degradation	(c)	×
×	Rely	(d)
(e)	×	significant



SOLVING QUESTION NO.03

❖ Fill in the empty cells with appropriate words according to their parts of speech:

[41th BCS]

Solution:



SOLVING QUESTION NO.03

❖ Fill in the table by putting words in the empty cells according to their parts of speech:

[40th BCS]

Sl. No.	Noun	Verb	Adjective
(a)	Consumption		X
(b)		X	Necessary
(c)	Inclination	X	
(d)		decrease	X
(e)	X		urban



SOLVING QUESTION NO.03

❖ Fill in the table by putting words in the empty cells according to their parts of speech:

[40th BCS]

Solution:



SOLVING QUESTION NO.03

❖ Fill in the empty cells with appropriate words according to their parts of speech:

[38th BCS]

Noun	Verb	Adjective
acquiescence	(a)	x
(b)	assume	
assertion	(c)	x
confidence	x	(d)
(e)	believe	



SOLVING QUESTION NO.03

❖ Fill in the empty cells with appropriate words according to their parts of speech:

[38th BCS]

Solution:



SOLVING QUESTION NO.03

❖ Fill in the table by putting words in the empty cells according to their parts of speech:

[37th BCS]

Noun	Verb	Adjective
(a) Strength		X
	(b) Resist	
(c) Penetration		
		(d) Essential
(e) Preservation		



SOLVING QUESTION NO.03

❖ Fill in the table by putting words in the empty cells according to their parts of speech:

[37th BCS]

Solution:



SOLVING QUESTION NO.03

❖ Fill in the table by putting words in the empty cells according to their parts of speech:

[36th BCS]

Noun	Verb	Adjective
(a) danger		
	(b) disagree	
(c) brotherhood		
		(d) real
(e) democracy		



SOLVING QUESTION NO.03

❖ Fill in the table by putting words in the empty cells according to their parts of speech:

[36th BCS]

Solution:

A - Abate
Abyss symbolise
Vocabuilders
Farhad Hossain
~~Masters~~ Masum
Mnemonic technique
RE - Aristotle
GRE verbal
Gmail

BCS কঠিন নয়;
প্রস্তুতি যদি গোছানো হয়

neighbor
neighbor - American
কিভাবে - letter