



WELCOME



*A PRESENTATION ON
PHRASE AND CLAUSE*

THE
 **IMPERIALS**

PART ONE

PHRASE

CONTENTS



Phrase

- What is phrase?
- ✓ A phrase is a grammatical term referring to a group of words as a single unit.
- ✓ A phrase isn't a complete sentence as doesn't include a subject & a verb.



Identification of Phrase



A phrase is a group of words.



Will not contain a subject & a verb.



Is not a complete sentence with valid meaning.

Differences between Phrase & Sentence

<i>Phrase</i>	<i>Sentence</i>
<ul style="list-style-type: none">• Does not express complete thought.• It doesn't have a subject or predicate or both.• Phrase can't be used alone.	<ul style="list-style-type: none">• Express complete thought.• It has a subject or predicate or both.• Sentence can be used alone.

Examples

- ❑ Saturday became a cool, wet afternoon.
- ❑ Singing for his supper was how he earned his keep.
- ❑ Sailing into the sunset was the perfect end to the book.

**Noun
Phrase:**
the tiny
mouse



**Verb
Phrase:**
was reading



**Adjective
Phrase:**
very tall



**Adverb
Phrase:**
only
occasionally



**Prepositional
Phrase:**
on the table



Phrase: a group of two or more words functioning as a meaningful unit within a sentence or clause.

Classification of Phrase

Noun
Phrase

Adjective
Phrase

Prepositio-
nal
Phrase

Adverb
Phrase

Verb
Phrase

Infinitive
Phrase

Gerund
Phrase

Participle
Phrase

Absolute
Phrase

Appositive
Phrase

THE
 **IMPERIALS**

Noun Phrase

Definition: A noun phrase is a group of words that work together to name and describe a person, place, thing, or idea.

Structure of Noun Phrase

Noun Phrase=Noun+Modifiers

Uses of Noun Phrase in Sentences

1. The bohemian household was well-decorated.

(Noun phrase as a subject)

2. I see a striped zebra.

(Noun phrase as an object to the verb "see")

3. Mary lives in an eclectic household.

(Noun phrase as a prepositional object; preposition = "in")

Another Example of Noun Phrase for You:

A quick brown fox jumps over the lazy dog.

Here, “A quick brown fox” & “The lazy dog”
is both a noun phrase.



Verb Phrase

Definition:

A verb phrase is the portion of a sentence that contains both the verb and either a direct or indirect object (the verb's dependents).

Structure of Verb Phrase

Verb Phrase = Principle Verb + Auxiliary Verb

Uses of Verb Phrases in Sentences

1. Despite his knee injury, he did go to the gym.

2. He is interested in playing new games.

3. I am writing articles on various topics.

Adjective Phrase

Definition:

A group of words that describe a noun or pronoun in a sentence, thus functioning as an adjective is adjective phrase.

Structure of Adjective Phrase

Adjective
Phrase=Adjective+Intensifier

Examples of Adjective Phrase

1. The dazzlingly beautiful woman walked down the street.
2. The cost of the car was way too high.
3. The man covered with sweat trudged his way home.
4. Something in the corner was moving.

More Examples of Adjective Phrase

The following phrases modify the predicament of the sentence:

1. Extra buttons came with the coat.
2. Gremlins cause mischief inside of machines.

The phrases mentioned below modify objects and will follow the word they are modifying:

1. She painted her room lemony yellow.
2. They are proud of their team winning the championship.

THE
 **IMPERIALS**

Adverb Phrase

Definition:

- An adverb phrase is a word group with an adverb as its head. This adverb may be accompanied by modifiers or qualifiers.
- An adverb phrase can modify a verb, an adjective, another adverb, or even an entire sentence or main clause.

Structure of Adverb Phrase

Adverb Phrase



First

Structure

Pre-modifier+Adverb

Second

Structure

Pre-modifier+Adverb+Post-modifier

Examples of Adverb Phrase

- Tom *won* first prize in the school running race.



Here, the adverb phrase tells where Tom won, so it is an adverb phrase of place.

- The prize giving ceremony will be held in the evening.

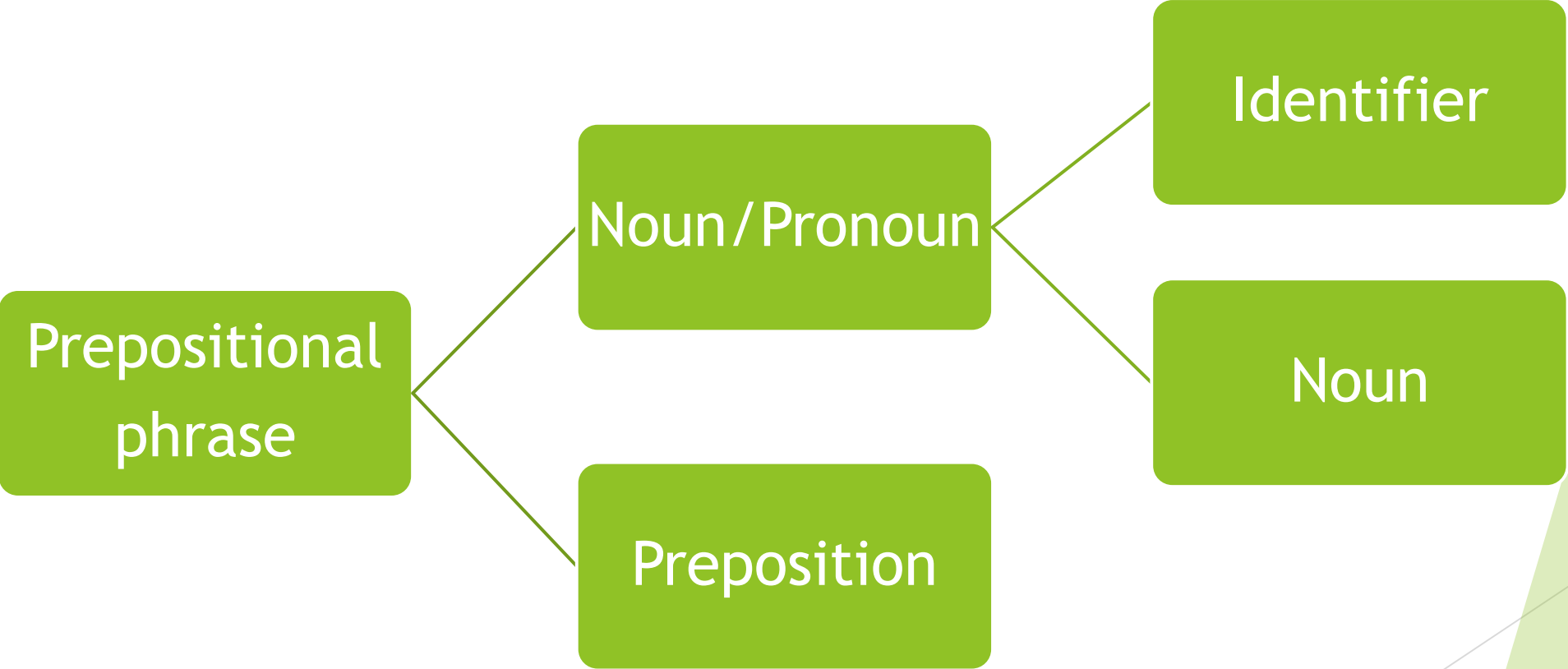


Prepositional Phrase

Definition:

Prepositional phrases are groups of words containing prepositions. Remember that prepositions are words that indicate the relationships between various elements within a sentence, and you'll never have difficulty identifying prepositional phrases.

Structure of Prepositional Phrase



Infinitive Phrase

What is Infinitive clause?

- ✓ An infinitive phrase will begin with an infinitive [to + simple form of the verb]. It will include objects and/or modifiers.

Structure of Infinitive Phrase

- Infinitive Phrase can act as an adjective, adverb at a noun.

General figure:

Infinitive Phrase=Infinitive+Modifiers

Examples of Infinitive Phrase

□ I don't want to study for my test.

Infinitive



Base
form



Modifiers

THE
 **IMPERIALS**

Gerund Phrase

Definition:

A gerund phrase is a group of words that includes a gerund and any other words.

Structure of Gerund Phrase

- A gerund may be used like an ordinary single-word.
- It work as a noun or object or subject.

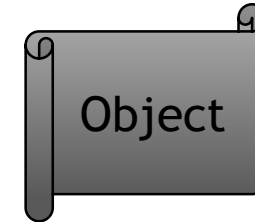
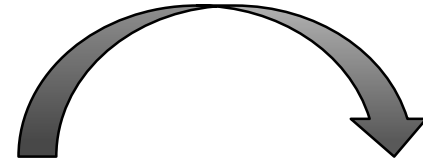
General figure :

Gerund Phrase=Gerund + Modifiers

Examples of Gerund Phrase

- In summer ,Kara prefers swimming daily

↳ Gerund



- Sophia likes jumping on the trampoline

↳ Gerund phrase

Participle Phrase

Definition:

A participle is a group of present participle or past participle verb, modifiers and other linked words which acts as an adjective in a sentence.



Structure of Participle Phrase

- A participle phrase is punctuated with a comma or commas.
- It always acts as an adjective in a sentence.

Participle

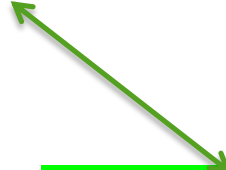
Phrase=Participle(present / past)+Modifier

Examples of Participle Phrase

- Sweeping across the night sky, the bats hunted their prey.



Present participle



Participle phrase

- The sun having risen, we set out for a journey.



participle phrase

Absolute Phrase

Definition:

A phrase having a subject but no finite verb and modifying the full sentence is referred to as an Absolute Phrase.

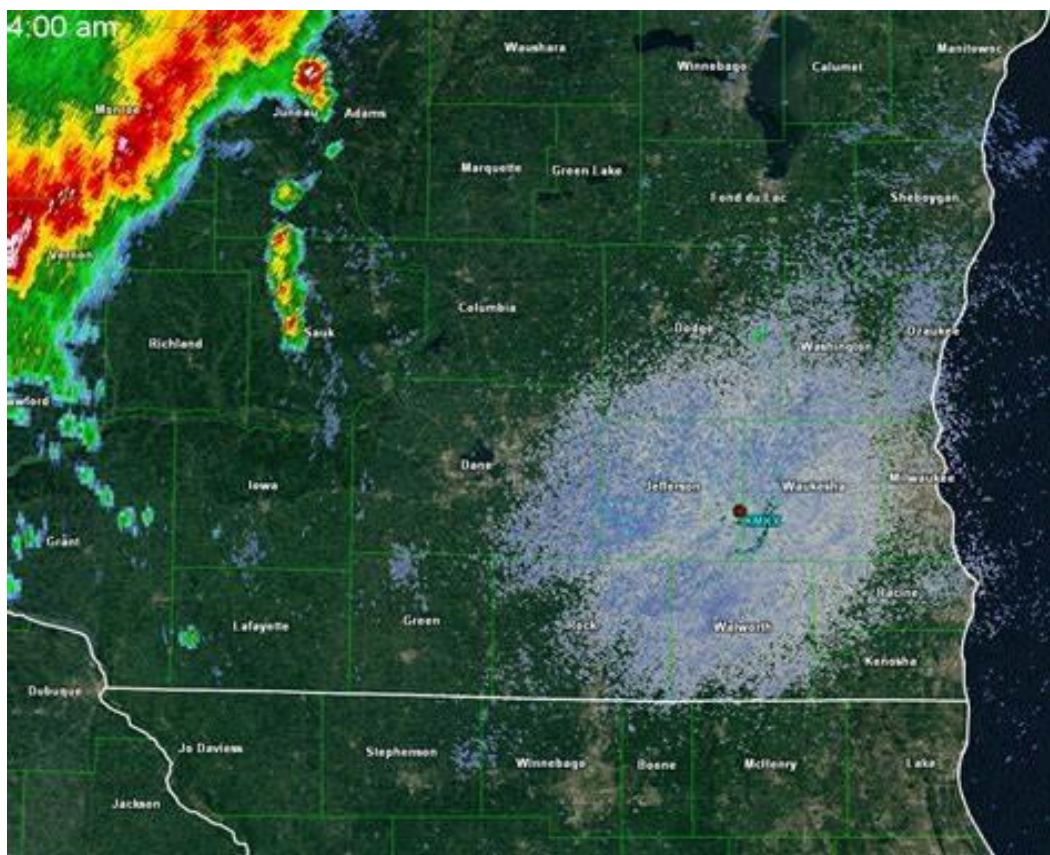


**Absolute
Phrase=Noun/Pronoun+Participle+Modifiers**

Examples of Absolute Phrase

- ▶ Weather permitting, we shall meet in the evening

↳ absolute phrase



Appositive Phrase

Definition:

An appositive is a noun or phrase that rename or describe the noun to which it is next.

- ▶ An appositive phrase consists of an appositive and its modifiers.
- ▶ Appositive provides some extra information

Examples of Appositive Phrase

- ▶ The newspaper, *The New York Times*, first appeared in 1850s.



- ▶ The Lindy Hop, a dance style, became popular in 1920s.

THE
 **IMPERIALS**

PART TWO

CLAUSE

Topics Going to Be Cleared

- Clause, definition, structure
- Difference between phrase and clause
- Classification of clause
- Independent / Principal Clause
- Dependent / Subordinate Clause
- Subordinate Conjunction

CLAUSE

- What is Clause?
- ✓ A clause is group of words that consists of a subject and at least a finite verb which creates a complete thought.
- ✓ It is used as a part of a sentence .



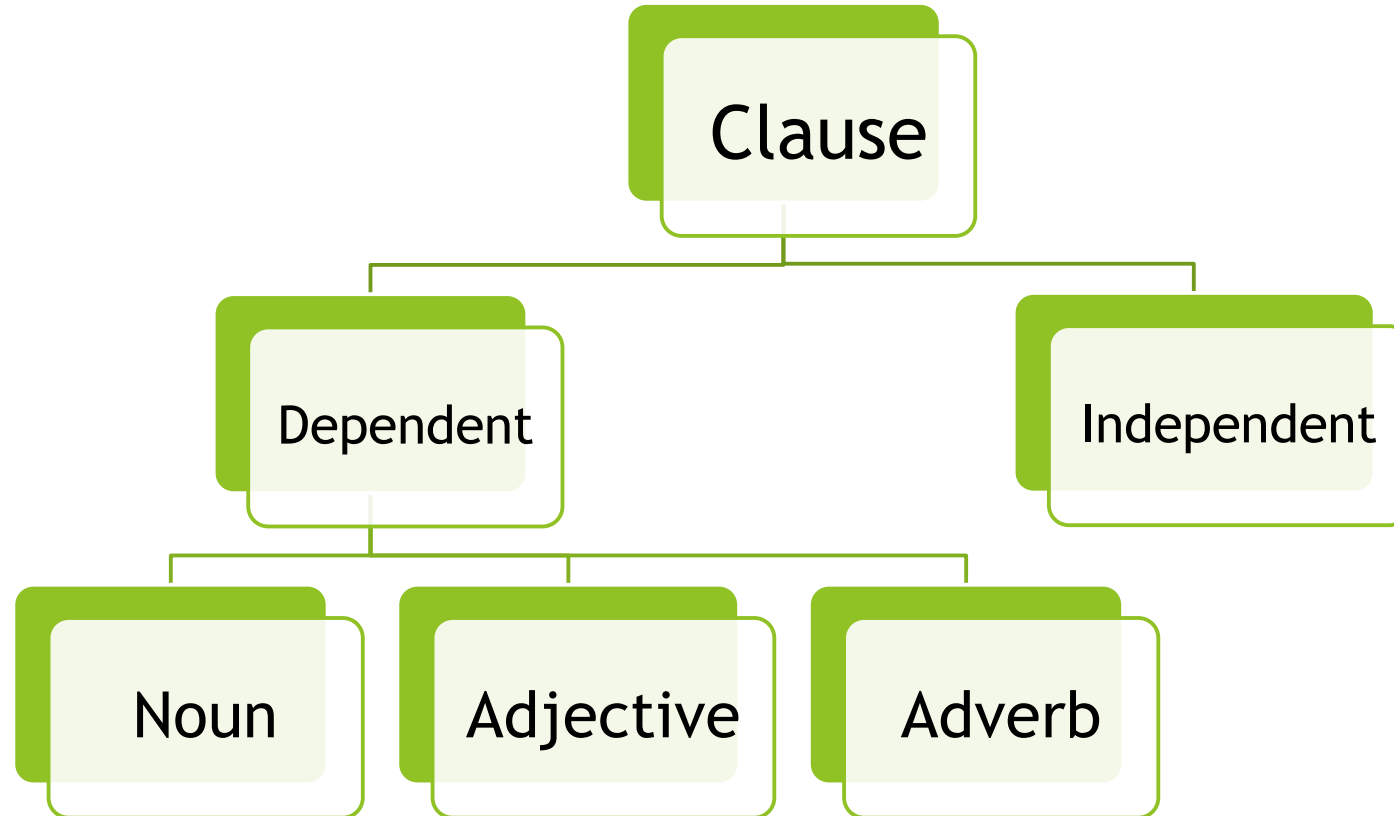
Main Difference - Clause vs Sentence

- ❖ Sentence always conveys an independent meaning.
- ❖ Clause does not always convey an independent meaning.

Examples of clause

- ▶ Whether *we will succeed* is uncertain .
- ▶ The boy *who came here* is my friend.
- ▶ He goes to the office *whenever he wants* .

Classification of Clause



THE
 **IMPERIALS**

Independent/Principle Clause

- A clause that doesn't depend on other clause to express its meaning is called independent clause or main clause.
- Its creates complete thought.

Examples:

1. *It is dark.*
2. *You should go.*
3. *He is intelligent* but he is selfish.

Dependent or Subordinate Clause

- ❑ A clause that can't express the meaning without the help of main clause is called dependent clause or subordinate clause.
- ❑ It always contains subordinate conjunction or relative pronoun or adverb
- ❑ Subordinate conjunction must precede the dependent clause

Examples:

1. I think that you will like it.
2. I don't know when I will return.
3. If I find your pen, I will give it to you.

Subordinate conjunction

Definition: A Subordinate conjunction is a word or a group of words that joins two clauses and shows the relation between themselves preceding the main clause .

Examples :

- ❑ He was walking fast so that he could attend in the class
- ❑ Though he studied hard, he could not pass in the exam.

Some subordinates conjunctions

1. When	9. Wherever	17. Than	25. If	33. How
2. While	10. Though / Although	18. Rather	26. Unless	34. Why
3. After	11. As	19. As...as	27. Provided	35. Whether
4. Before	12. Because	20. So...as	28. Who	36. However
5. Till / Until	13. In order that	21. As far as	29. Which	37. Whatever
6. Since	14. Lest	22. So...that	30. What	38. Whoever
7. Whence	15. That	23. As if	31. Whom	39. Whichever
8. Where	16. So that	24. In case	32. whose	40. Even if

For Better Understanding

Subordinate Coordinates	Example
1. That	He said that he would go.
2. Who	I know who you are .
3. Which	Which you prefer is not known to me.
4. What	No one knows what caused the accident.
5. Whom	I can guess whom you want to see.
6. Whatever	I earn whatever I can.
7. Whose	Do you know whose book is this?
8. Where	I don't know where he come form.
9. When	Please tell me when you will come .

Position of A Subordinate Clause(SOC) in A Complex Sentence

1. Before the main clause: SOC + Comma(,) +Main clause

- ❖ Even if you fail , you shouldn't give up hope.
- ❖ Whatever you may say , I don't believe you.

2. After the main clause: Main clause + SOC

- ❖ You may take whichever you like.
- ❖ I shall wait for you till you complete the job

THE
 **IMPERIALS**

Noun Clause



- ❖ Acts as a noun in the sentence.
- ❖ Contains of a subject & a verb.
- ❖ Can replace any noun in sentence.
- ❖ Can function as a subject , object or a complement.

Noun Clause introduced with some words such as-

How

What

That

Whatever

When

Which

How

Whom

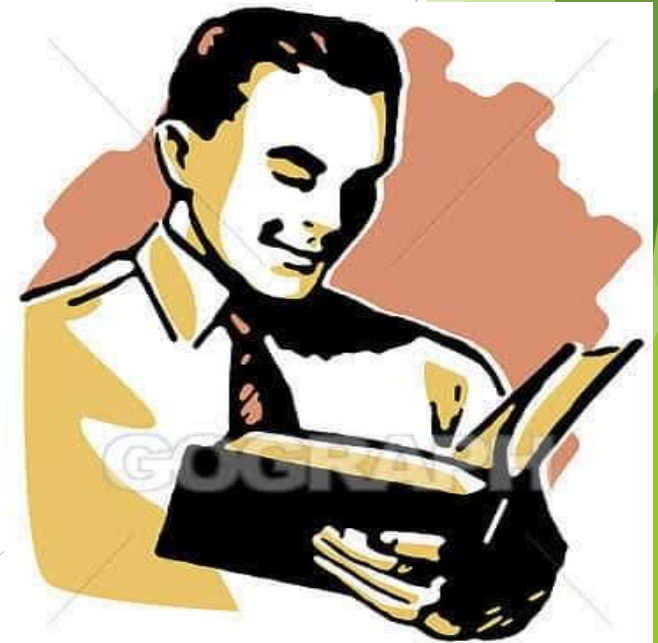
Examples & Explanation

I understand *what the writer wanted to express.*

↓
Independent
Clause

The writer + Wanted = Clause
Sub Verb

Dependent
Noun Clause



Adjective Clause

- A type of dependent clause that acts as an adjective.
- Contains a subject & a verb.
- How does an adjective work?
- An adjective describes a noun or pronoun.

Adjective Clause

- ▶ Adjective Clause begins with:

Relative Pronoun

- ▶ That
- ▶ Where
- ▶ Who
- ▶ Whom
- ▶ Which

Relative Adverb

- ▶ When
- ▶ Where
- ▶ Why

Examples & Explanation

All the bold parts in the following examples are adjective Clause



Examples:

- ❑ The Person **whom we met yesterday** was the famous poet Al Mahmud.

Independent
Clause

Acts as Adjective that describe the person.
Consists of a Sub+Verb(we met).
Describe the noun as an adjective.

Types of Adjective Clause

There are two types of adjective clause:

- ❖ **Restrictive Clause**
- ❖ **Non restrictive clause**

Restrictive Clause

- ✓ A restrictive clause is a clause which functions as an adjective to identify the word it modifies.

A restrictive clause is essential for the intended meaning.

A restrictive clause is not offset with commas.

Example of Restrictive Clause

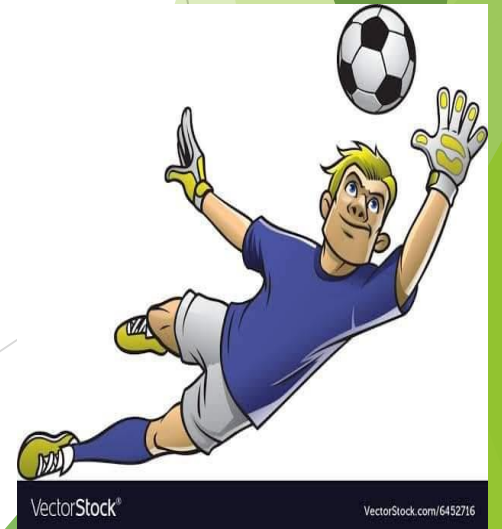
✓ Using relative pronoun-

✓ The boy who broke the window is at the door.

✓ The man who plays goalkeeper for our village football team has worked his father's shop for twenty years.



#106868515



Non Restrictive Clause

□ *What is non restrictive clause?*

A non restrictive clause is an adjective clause that adds extra or non essential information to a sentence.

❖ *Non restrictive clauses are usually set off by commas.*

Kinds of Non restrictive clause:

It can be divided into two types, such as-

- a) Using relative pronoun as a subject.
- b) Using relative pronoun as an object.

Examples of Non Restrictive Clause

Using relative pronoun as a subject-

- The boy next door, who studies in the city school has brought a brand new bicycle.
- Chocolate cake, which is my favourite treat goes well with vanilla ice cream.



THE
 **IMPERIALS**

Difference between Restrictive and Non restrictive clause

Restrictive Clause	Non restrictive Clause
Are necessary for identification-tell exactly which thing or person.	Are interesting with extra information-but don't identify or tell which one.
Don't have commas around clauses.	Always have commas around clauses.
Also known as identifying or defining clauses.	Also known as non-identifying or non-defining clauses.

What is Adverbial Clause?



Adverbs

Runs quickly

Walks slowly

Reads attentively

Examples of Adverb

- ▶ He runs quickly.
- ▶ The old man walks slowly.
- ▶ She reads attentively.

What is adverb

Adverbs give us more information about verb.

Definition of adverbial clause

1. An adverbial clause is type of dependent clause that acts as an adverb in the sentence.
2. An adverbial clause will always contain a subject and a verb.
3. However, it cannot stand alone as a complete thought.

Examples of Adverbial Clause

- ▶ I ate my snack after I parked the motorcycle.



Explanation

- ▶ The adverbial clause is acting as an adverb in this sentence.
- ▶ The adverbial clause modifies when i ate my snack. The clause contains a subject and verb.
- ▶ However ,it cannot stand alone as complete thought .“After I parked the motorcycle.” is not a complete sentence.

THE
 **IMPERIALS**

Types of Adverbial Clause

Different Types of Adverbial Clause

Place or Location

Time

Possibility or conditionality

Reason

Degree of Comparison

Manner

Adverbial Clause: Place or Location

An adverbial clause of place talks about the location where the action of the verb in the main clause is being carried out.

An adverbial clause of place usually starts with these subordinate conjunctions-

Where

Wherever

Anywhere

Examples of Adverbial Clauses of Place or Location

I have put *it where I can find it.*

They can stay where they are.

More examples:

Wherever you live, I will come to the place to meet you.

He let the caravan *wherever he wanted to go.*

Let us go to *where they asked to wait.*

Adverbial Clause: Time

An adverbial clause of time indicates the time an action or verb occurs. It gives answer to the question “When”.

List of Subordinate Conjunction:

While

After

Whenever

Before

Since

As

Till

Until

Examples of Adverbial Clause of Time

I went to my friend's house *after I had finished my homework.*

More Examples:

I cooked the food before I ate it.

The students study English when they are at school.

I will do it when I am free.

Adverbial Clause: Reason

An adverbial clause of reason indicates why the particular action of the verb is taken.

The adverbial clause of reason are normally introduced by these subordinating conjunctions-

Because

Since

In order to

As

So that

Due to

Owing to

The cause of

The reason why

Examples of Adverbial Clauses of Reason

Because he likes his master, he helped him.

More examples-

I did not buy it *because I did not like the look of it.*

She may not be charged to court *since she has returned the stolen fund.*

He was denied entrance *as he could not pay the required fees.*

Adverbial Clause:

Possibility or Conditionality

This clause usually states the condition the verb in the main clause stipulates. This type of clauses indicate possibility or conditionality.

An adverbial clause of possibility or conditionality normally is introduced with these conjunction:

If Whether Provided Unless As long as Though
Although Even

Examples of Adverbial Clauses of Conditionality

I will only attend the event *if you personally invite me.*

Whether she likes it or not, she must complete her education.

As long as you cooperate, there would be no problem.

Whatever he gives you, do not complete.

The underlined clauses indicate possibility or conditionality of an incident to happen.

Adverbial Clause: Degree or Comparison

Adverbial clause of degree or comparison usually indicates the degree, that is ,the relative extent or the comparison of the verb in the main or independent clause.

The subordinate conjunction that usually introduce this type of clause:

As

Than

As...as

So...as

More than

Less than

Examples of Adverbial Clauses of Degree & Comparison

The factory is bigger than the one in the capital city.

The students were quicker in solving the sum than I expected.

The villains are as cunning as a fox.

We are as qualified as their own team.

THE
 **IMPERIALS**

Adverbial Clause: Manner

Definition :

The adverbial clause that Indicates manner of action/verb in the main clause and usually starts with one of these subordinate conjunctions "as" "as if" "as though" "like" is generally called as "Adverbial clause of manner".



Differences between Phrase & Clause

Phrase	<i>Clause</i>
<ul style="list-style-type: none"><li data-bbox="163 586 1098 696">• A phrase is a group of word. Subject & verb isn't necessary for phrase.<li data-bbox="163 776 1085 953">• A phrase cannot express its meaning alone. It requires other parts of speech to complete its meaning.<li data-bbox="163 1033 1123 1210">• Example: <u>During the time of liberation war,</u> our soldiers fought as if their lives depended on it.	<ul style="list-style-type: none"><li data-bbox="1169 586 2074 696">• A clause is also a group of word. Subject & verb is a must for clause.<li data-bbox="1169 776 2137 886">• A clause can express its meaning as it his its own subject & verb.<li data-bbox="1169 1033 2125 1210">• Example: During the time of liberation war , our soldiers fought <u>as if their lives depended on it.</u>

Sample Questions

1. What is phrase?
2. Give an example of the application of subordinate conjunction.
3. What is the difference between clause & sentence?
4. Give an example of adverbial clause of time.

Answer of Sample Questions

1. What is phrase?

Ans: A group of two or more words functioning as a meaningful unit within a sentence or clause.

2. Give an example of the application of subordinate conjunction.

Example: When the doorbell rang, my dog Scott barked loudly.

3. What is the difference between clause and sentence?

Ans: structural difference: A complete sentence requires subject, verb, object. But a clause is built with subject and verb.

Meaning: A meaningful sentence obviously express a certain meaning. Clause can reveal its meaning but not everywhere. Dependent clause can not express its meaning alone.

4. Give an example of adverbial clause of time.

Ans: Will you wait here until I come?



THANK

YOU